

GROHE
GRANDERA™
WELCOME
HOME

GROHE.COM

GROHE
SPA



GRANDERA



WELCOME HOME TO GROHE GRANDERA™

Home is less a specific place and more a certain feeling. A feeling of familiarity, comfort and security. Somewhere you can recharge your batteries, rest and relax - a place of retreat. Somewhere everything is exactly as it should be. Every detail just right. From the ceiling light to the floorboards. Nothing left to chance. Especially not in the bathroom, your own personal spa area. Welcome home. With GROHE Grandera™.

Inspired by the squircle, the GROHE Grandera™ collection combines circular and square shapes in an innovative design that is both elegant and powerful, timeless and modern. The result - unique faucets and showers that seem to defy the laws of geometry. Edges, arcs, lines, squares – all blend fluidly into each other to provide the perfect backdrop for water in all its beauty.

FOR PERFECTLY TAILORED SOLUTIONS

One of the guiding principles in the development of the Grandera™ collection was to afford you complete freedom in planning and designing your bathroom. Only then can you realise your visions of design and comfort right the way through the bathroom without having to accept any compromises. Our perfectly tailored solutions offer you everything you need to make your dream bathroom a reality – from the faucets to the soap dispenser.

WELCOME HOME TO TIMELESS ELEGANCE

Fluidity in design: the GROHE Grandera™ collection is all about fluid shapes and combines round and square elements harmoniously. Some might see this as bowing to modern architecture, but it's so much more. Grandera™ is a completely new design idiom of such innovation that it blurs the boundaries between simple, straight shapes and opulent, round shapes. From the trapezoidal base to the round outlet, Grandera™ breaks new ground and in this way yields a clean, new design that is pleasing yet powerful, and above all timelessly elegant.

Like all GROHE SPA® collections, Grandera™ is manufactured in Germany. This enables us to guarantee extraordinary quality as well as the perfect aesthetic. The finishes are extremely scratch-resistant and never lose their shine, even when subjected to heavy use and frequent cleaning. Regardless of whether you opt for a finish in chrome, chrome/gold or brushed nickel. Grandera™ also features the proven GROHE SilkMove® technology for a lifetime of smooth and precise handling.



For our Grandera™ accessories we choose only top-quality ceramics that blend in perfectly in every bathroom design.

RIGHT DOWN TO THE SMALLEST DETAIL

In addition to the perfectly shaped faucets and showers, GROHE Grandera™ also features a wide range of stylish accessories perfectly tailored to the collection. An elegant lamp, soap dispenser or tooth brush tumbler not only complete the design scheme in your bathroom, but also enhance comfort thanks to their considered placement.



WELCOME HOME THE WAY YOU ALWAYS ENVISAGED IT

GROHE Grandera™ offers all you need to make your bathroom everything you always envisaged. Regardless of whether your bathroom design centres on personal care, regeneration or relaxation. Why not add a Grandera™ hand shower or head shower for a whole new showering experience? GROHE DreamSpray® technology ensures an even flow of water at the perfect temperature through each and every nozzle. And in addition uses much less water. The GROHE EcoJoy™ feature not only helps you to save water and in this way conserve our natural resources, but also to reduce your own energy consumption since less water needs to be heated.



COMPLETE FREEDOM

After a long, stressful day, there is nothing as relaxing as a soothing bath. For most people, a bath is a byword for pure relaxation and essential luxury. Free-standing baths are currently enjoying a resurgence in popularity, providing both a personal spa experience and an eye-catching design feature. With the floor-mounted, free-standing bath filler with hand shower, GROHE Grandera™ offers you an individual solution that combines a high level of comfort and an innovative design in a unique way. As you would expect from GROHE.



WELCOME HOME AROUND THE WORLD

Asian bathroom design is valued the world over for its simple, linear elegance. Just like the GROHE Grandera™ collection, it centres on clean edges and fluent shapes, which is why our faucets, showers and accessories are also proving popular in the East. The chrome/gold finish in particular blends seamlessly and without exception into the Asian style. This is because the colour gold stands for balance in Asian culture, making it the perfect choice for designing your own personal spa retreat.



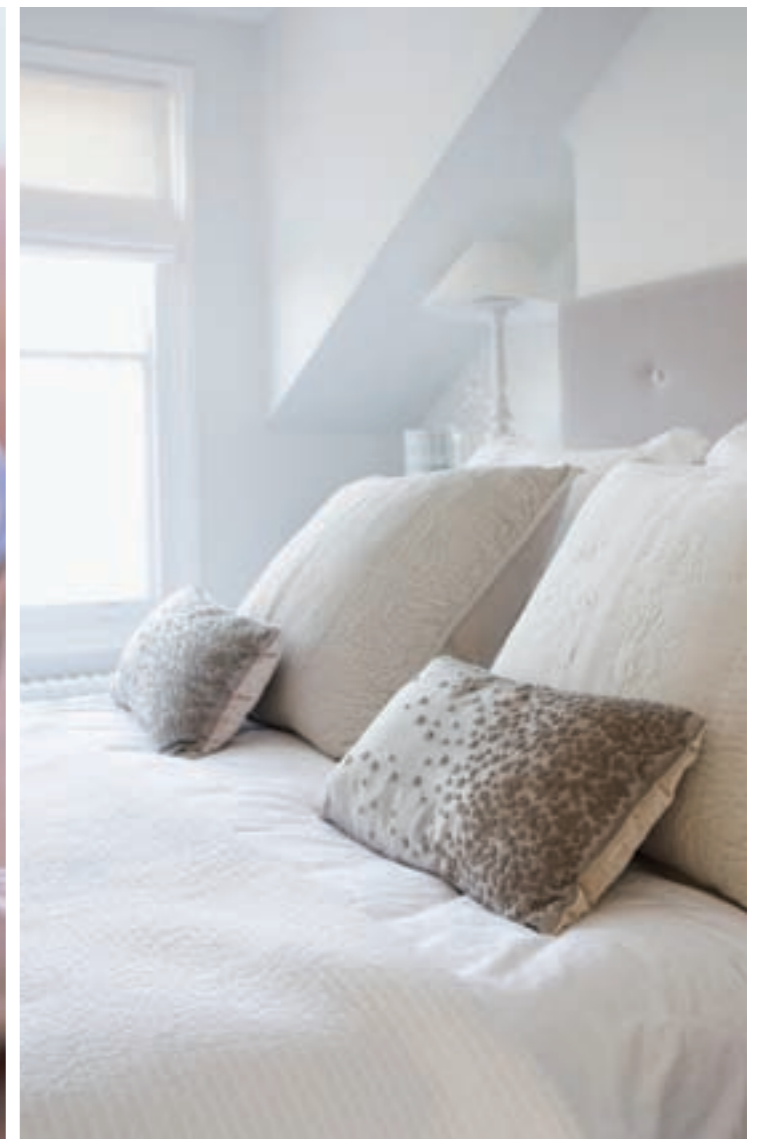
WELCOME HOME TO WESTERN FLAIR

American design is traditionally associated with a rustic style, usually with a fresh and modern twist. In the bathroom too. As with the quilts and wooden Shaker furniture so reminiscent of Americana, the focus here is on high-quality craftsmanship. This is one of the reasons why the GROHE Grandera™ collection is also so popular abroad too. The perfectly shaped faucets, showers and accessories in brushed nickel round out the bathroom design perfectly and make anyone using it immediately feel at home.



WELCOME HOME TO EUROPEAN STYLE

European design is as varied as the continent itself. Whether Mediterranean style, Scandinavian aesthetic or French opulence, the GROHE Grandera™ collection sets the perfect accent in every bathroom with its open, straightforward design idiom. This is because the faucets, showers and accessories in chrome are timeless and elegant rather than lavish or extravagant. And therefore perfectly at home in Europe's sophisticated bathing culture.



WELCOME HOME PIECE BY PIECE BY PIECE



● Chrome – 000



CHROME

Bright and precise – the Grandera™ collection in the chrome finish casts your bathroom in a very special light. And for a very, very long time. GROHE SilkMove® technology ensures ultimate ease of use.



● Chrome / Gold – IGO



CHROME / GOLD

Luxurious and elegant – the chrome/gold finish is the quintessence of style and comfort. Gold accents on the base, spout and lever demonstrate Grohe's attention to detail and passion for extraordinary design. GROHE StarLight® technology means that our faucets are particularly scratch-resistant and keep their shine for years.



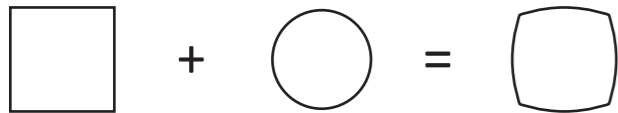
● Brushed Nickel – EN0



BRUSHED NICKEL

Warm and worldly – the Grandera™ collection in the brushed nickel finish marries a minimalist aesthetic and cosmopolitan design to produce faucets that keep their finish as on day one.

THE GROHE SQUIRCLE



Design is much more than an aesthetic by-product for us at GROHE. Our passion is combining form and function to optimum effect. That's why we keep breaking new ground. Like with GROHE Grandera™. Inspired by the squiracle, our design team developed a shape that reconciles seeming opposites in a completely new aesthetic.

BASIN & BIDET



23 303 000
Basin mixer
● ● ●
23 311 000
USA / Canada
● ● ●



23 313 000
Basin mixer for free-standing basins
● ● ●
23 314 000
USA / Canada
● ● ●



20 417 000
3-hole basin mixer
● ● ●
20 418 000
USA / Canada
● ● ●



20 389 000
3-hole basin mixer high spout
● ● ●
20 419 000
USA / Canada
● ● ●



21 107 000
Basin mixer
● ● ●
21 108 000
USA / Canada
● ● ●



20 414 000 | 20 415 000
3-hole basin mixer
projection 177 mm | 234 mm ● ● ●
20 416 000
USA / Canada
projection 234 mm ● ● ●



19 929 000 | 19 930 000
3-hole basin mixer
projection 177 mm | 234 mm ● ● ●
19 931 000
USA / Canada
projection 234 mm ● ● ●



24 034 000
USA / Canada
wideset bidet mixer
● ● ●



23 315 000
Bidet mixer
● ● ●



BATH & SHOWER



25 154 000
USA / Canada
Roman Tub Filler
● ●



19 936 000
4-hole bath combination
● ● ● ●



13 341 000
Bath spout
● ● ●
13 342 000
USA / Canada
● ● ●



19 919 000
5-hole bath combination
● ● ● ● ●



23 318 000
Bath/shower mixer
floor mounted
● ● ● ●



19 938 000
USA / Canada
Grohflex shower/bath dual function
Pressure balance valve trim
● ● ●



19 939 000
USA / Canada
Grohflex shower/bath dual function
Thermostatic trim
● ● ●



19 941 000
Central thermostat
● ● ●



18 651 000
GROHE EasyReach™ storage



23 316 000
Shower mixer
● ● ●



19 932 000
Shower mixer
● ● ●



19 934 000
Thermostatic shower mixer
● ● ● ● ●
19 937 000
Thermostatic shower mixer
with 2 way diverter ● ● ● ●



19 942 000
5-way diverter
● ● ● ● ●



23 317 000
Bath/shower mixer
● ● ●



19 920 000
Bath/shower mixer
● ● ●



19 948 000
Thermostat-Wannenbatterie
mit 2-Wege-Umstellung
● ● ● ● ●



19 944 000
Concealed valve
● ● ● ● ●

SHOWERS



26 037 000
Hand shower Grandera™ Stick
1 spray pattern: Rain
metal, with 7.6 l/min. / 2.0 gpm
GROHE EcoJoy™



27 993 000
Wall holder set
with hand shower Grandera™ Stick
1 spray pattern: Rain



27 970 000
Shower outlet elbow



27 969 000
Hand shower holder



26 038 000
Railset
900 mm



27 974 000
Head shower 210 mm
1 spray pattern: Rain

27 976 000
USA / Canada, 2.0 gpm



27 986 000
Shower arm
projection 286 mm

27 988 000
USA / Canada, 11 1/4"



27 982 000 | 27 978 000
Ceiling shower arm
length 292 mm | length 142 mm

27 984 000
USA / Canada, 11 1/2"

ACCESSORIES &
WALL PLATES



40 627 000
Shelf + Soap dispenser



40 626 000
Holder + Tumbler



40 628 000
Shelf + Soap dish



40 661 000
Lamp



40 630 000
Towel ring



40 629 000
Towel rail 600 mm



40 633 000
Bath grip



40 631 000
Robe hook



40 625 000
Toilet paper holder



40 632 000
Toilet brush set



38 505 000
Skate Air
Flush Actuation Plate





WELCOME HOME TO YOUR GROHE GRANDERA™ HOME SPA

Grohe AG
Feldmühleplatz 15
40545 Düsseldorf
Germany



Be inspired and discover the perfectly tailored GROHE Grandera™ complete solutions for every bathroom. Contact your GROHE partner or visit www.grohe.com/grandera

